

Welcome to the inVault Setup Guide. This guide will walk you through step-by-step installing and setting up your inVault Data Backup Software. If you have any problems or questions you can contact support at josh@computerheaven.com.

Let's get started!

Step 1:



Double click the inVault Data Backup icon.

Step 2:



Select your language and click "OK".

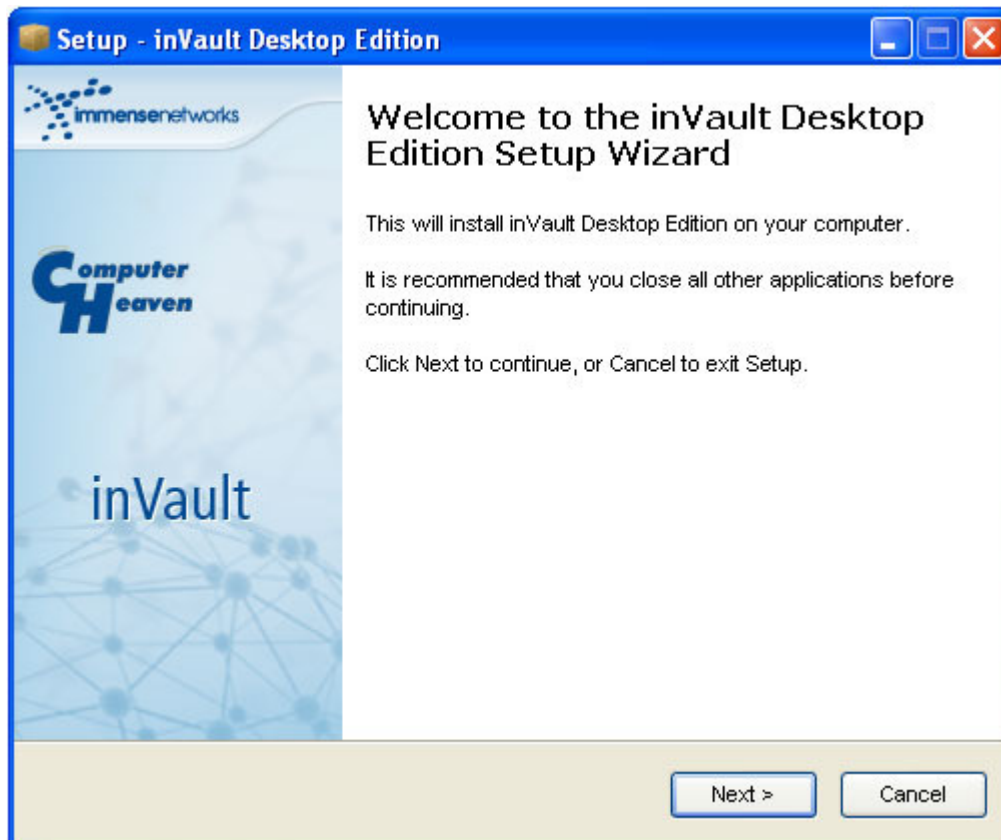
Step 3:



Click "Install inVault Desktop Edition".

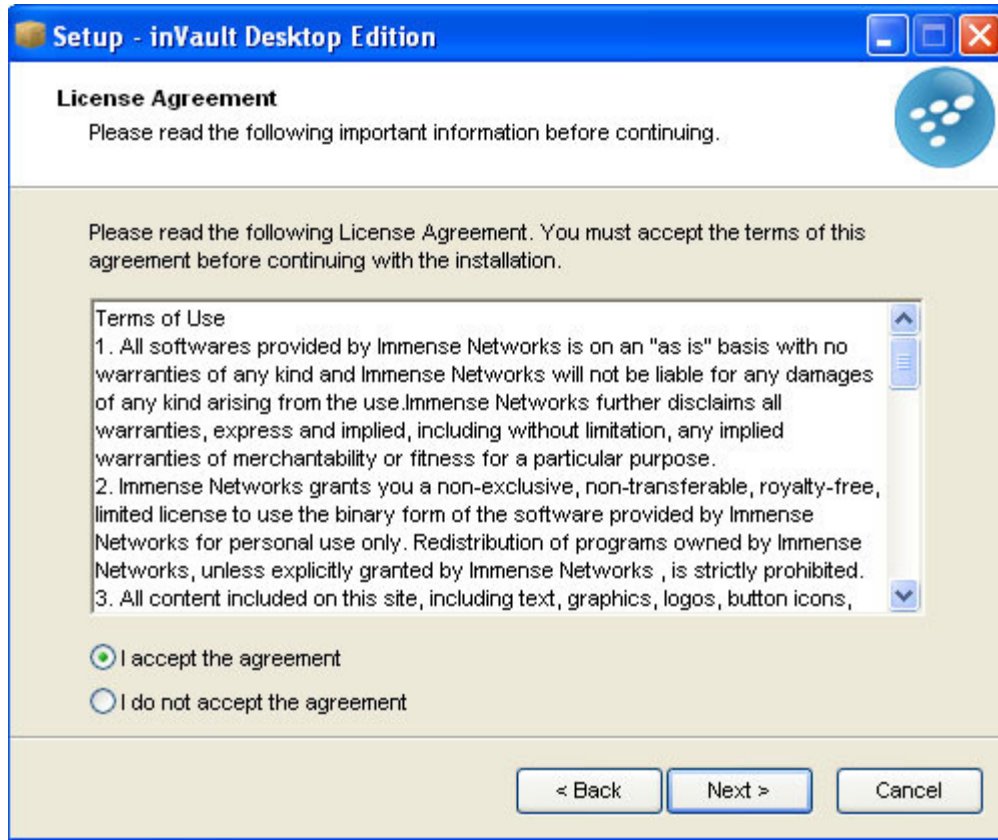
NOTE: If you wish to install Server Edition please contact support.

Step 4:



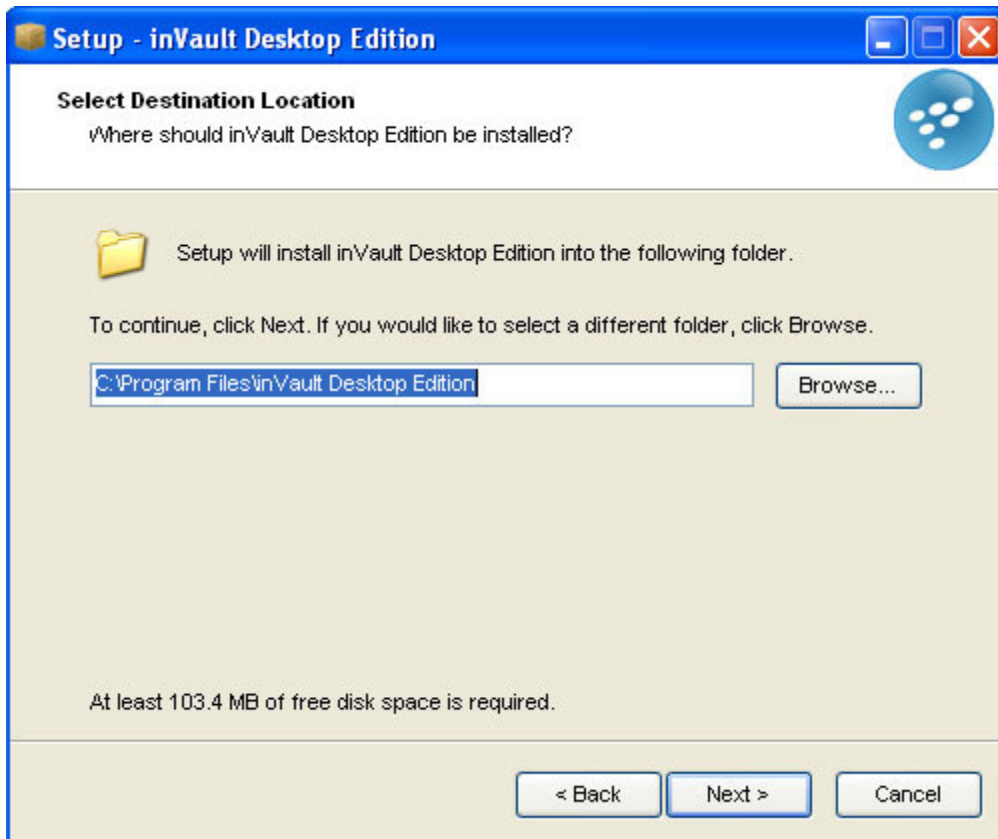
Click Next to continue.

Step 5:



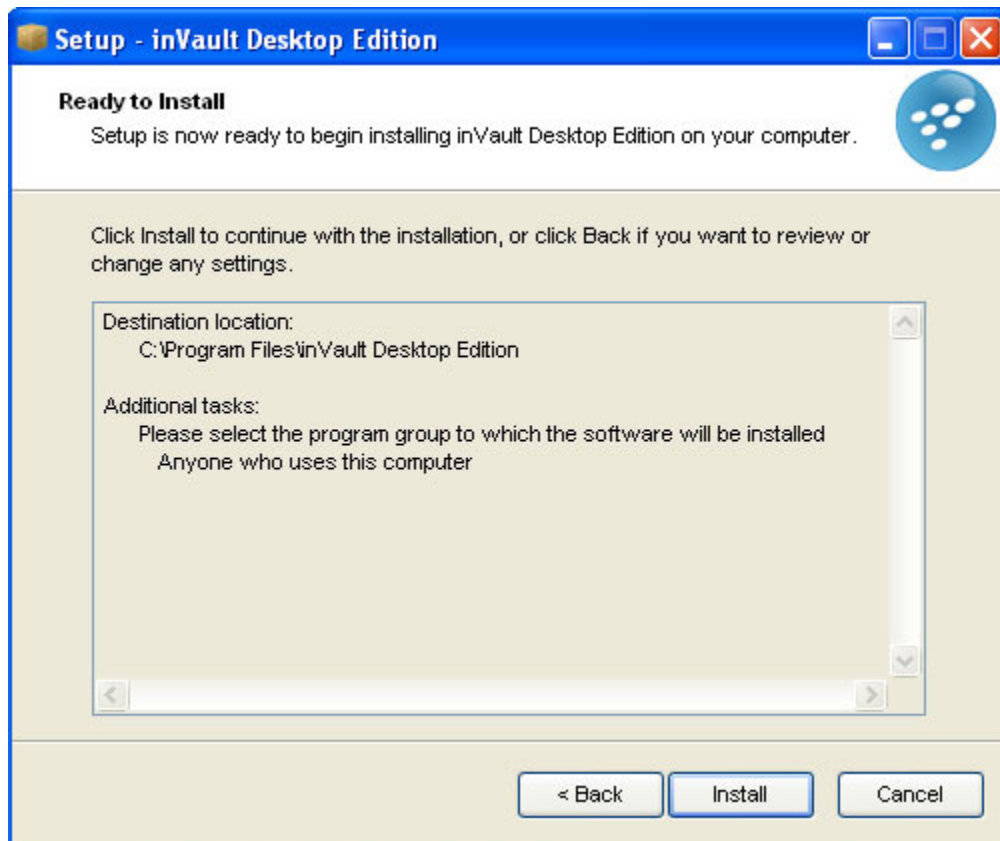
Read the license agreement and then click the "I accept the agreement" radio button. Click "Next".

Step 6:



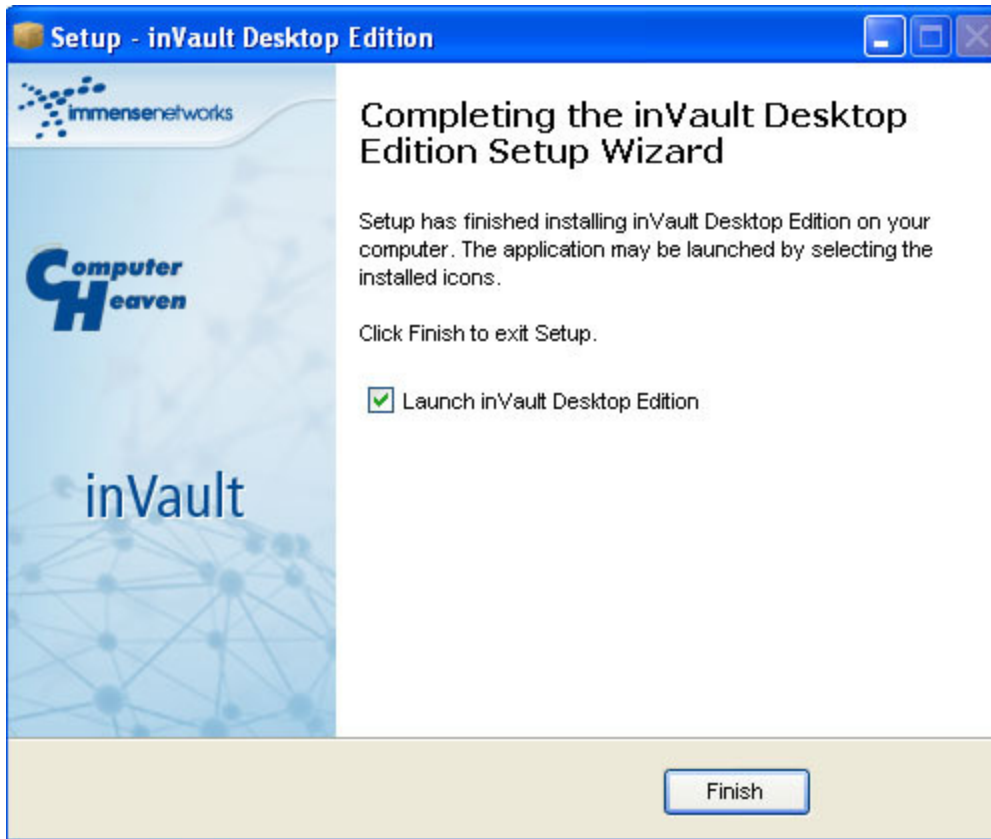
You can change the location of the install files, however it is recommend you keep the default settings. Click "Next".

Step 7:



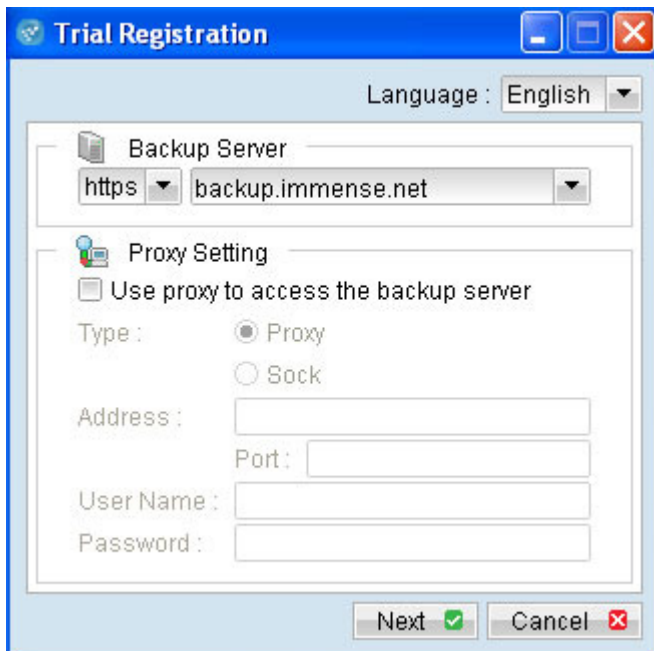
Click "Install"

Step 8:



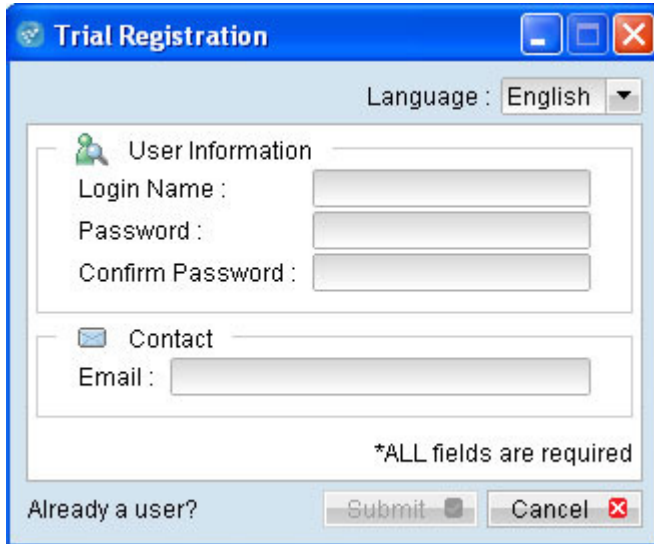
Click "Finish" to complete the installation. This will start the inVault software.

Step 9:



You do not need to change these settings, just click “Next”.

Step 10:



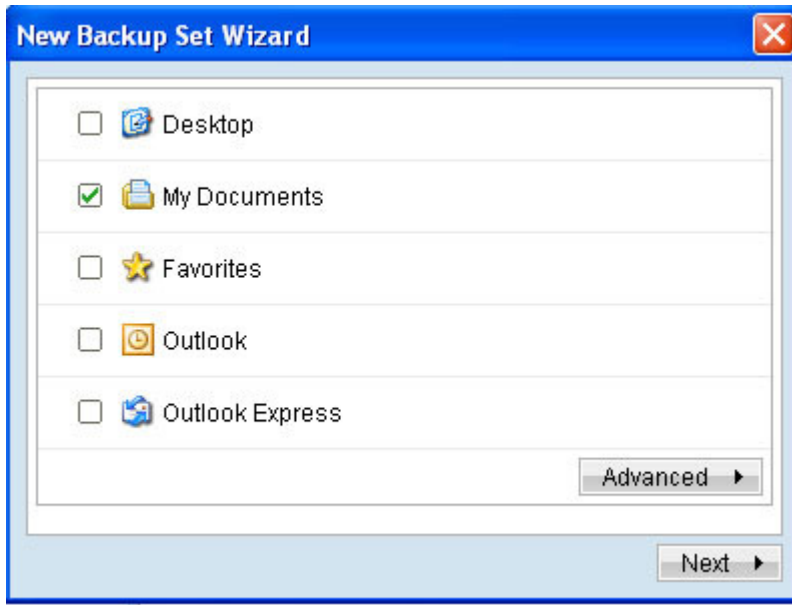
The image shows a window titled "Trial Registration" with a blue header bar. In the top right corner of the header are three standard window control buttons: minimize, maximize, and close. Below the header, there is a "Language:" label followed by a dropdown menu currently set to "English". The main content area is divided into two sections. The first section, titled "User Information" with a person icon, contains three text input fields: "Login Name:", "Password:", and "Confirm Password:". The second section, titled "Contact" with an envelope icon, contains one text input field labeled "Email:". At the bottom right of the form area, there is a note: "*ALL fields are required". At the bottom left, there is a checkbox labeled "Already a user?". At the bottom right, there are two buttons: "Submit" and "Cancel".

This page creates a user account for you. Your user account can be anything you like, including your name. Note that the Login Name cannot contain any spaces or special characters.

Make sure you right down your password!

Make sure to use a valid email address. This email address will be used to send you updates or any issues about your data backup.

Step 11:

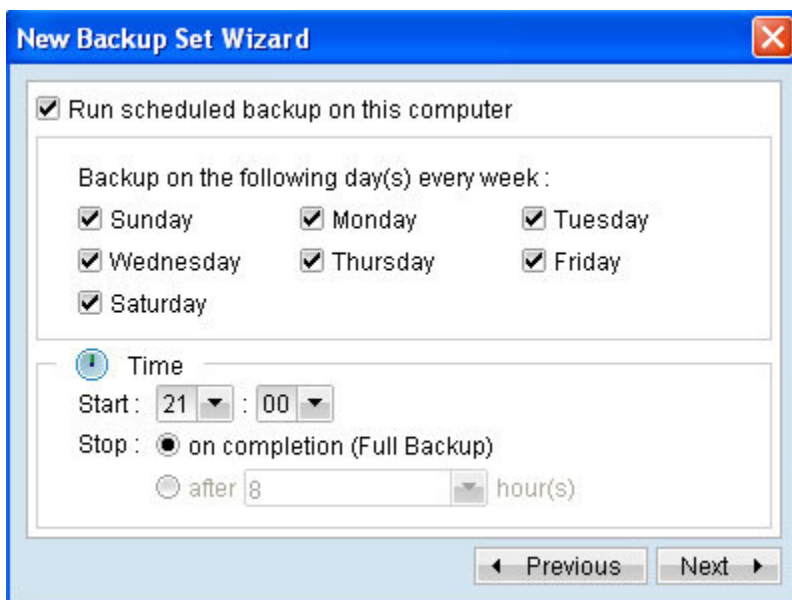


Select which files you want to back up. By default only the My Documents folder is backed up (this includes the My Pictures folder.)

You can click “Advanced” to get more options.

After selecting your files for back up click “Next”.

Step 12:



Set the schedule for your files to be backed up. By default it will back up every day.

Step 13:



Default standard encryption is used. This is an extra layer of security so no one else can see your data and files. If you choose to set your own encryption key you **MUST** keep track of that key. Support will not be able to recovery your key should you lose it.

You can choose to have your data un-encrypted, but this is not recommended.

Click "Ok"

You are all done! Your data backup will begin on the next scheduled time, and you receive an email confirmation when it is completed.

For any questions please contact support.